



# Working Group Meeting

---

September 2, 2025

# Meeting Agenda

- Community Health Assessment and Action Plan Update
- Discussion
- Code Assessment Survey Results
- General Project Questions & Next Steps



# Community Health Assessment & Action Plan

Progress Update





# Community Policy Overview



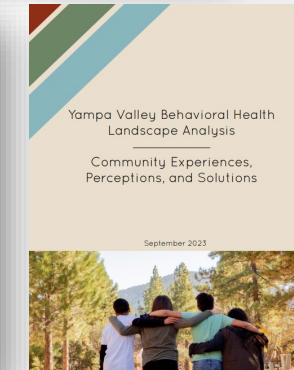
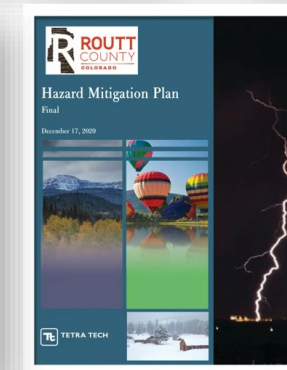
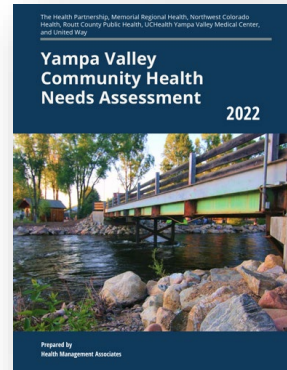
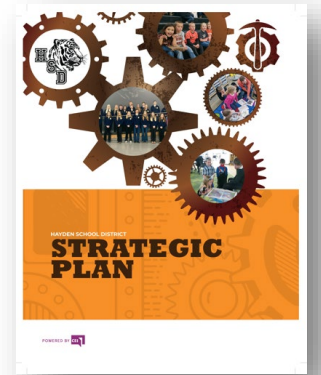
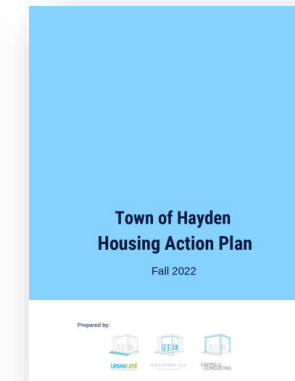
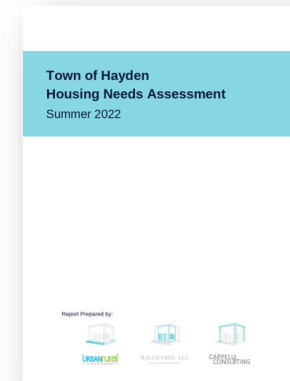
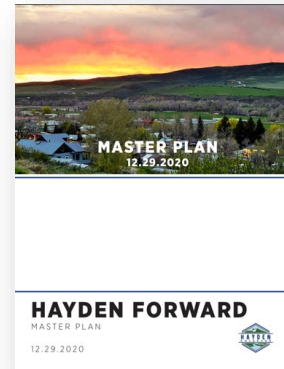
What's missing from our policy review for health-related recommendations?

## Local Level:

- [Hayden Forward Master Plan](#)
- [The Town of Hayden Housing Needs Assessment](#)
- [The Town of Hayden Housing Action Plan](#)
- [Hayden School District Strategic Plan](#)

## County or Regional Level:

- [2022 Yampa Valley Community Health Needs Assessment](#)
- [2024-2028 Routt County Public Health Improvement Plan](#)
- [2020 Routt County Hazard Mitigation Plan](#)
- [Yampa Valley Behavioral Health Landscape Analysis Community Experiences, Perceptions, and Solutions](#)
- [Schecky Youth Wellbeing Initiative Community Report \(2025\)](#)





# Stakeholder Interviews

**Goal:** Conduct 8 stakeholder interviews to summarize current programs and initiatives regarding community health in Hayden, identify gaps, and prepare ideas for engagement.

## Completed interviews:

1. Hayden Center
2. Colorado Department of Public Health and the Environment
3. Routt County Public Health
4. Hayden Parks and Recreation
5. Hayden School District
6. UC Health
7. Horizons
8. Northwest Colorado Health

## Next Steps:

- **Summarize themes from stakeholder interviews**
- **Compile outreach list for engagement**



# Preliminary Takeaways from Stakeholder Interviews

## Community Assets

Strong community identity and community support

Forward-thinking and innovative approaches

Collaboration and partnerships

Current initiatives and programs for youth (dental care, mental and behavioral health) + school integration

Opportunities for social connection and community gathering

Natural environment and outdoor recreation

## Opportunities

Increased capacity – staffing and funding resources

Access to healthcare

Youth and adult mental and behavioral health

Access to healthy and affordable food

Opportunities for physical activity

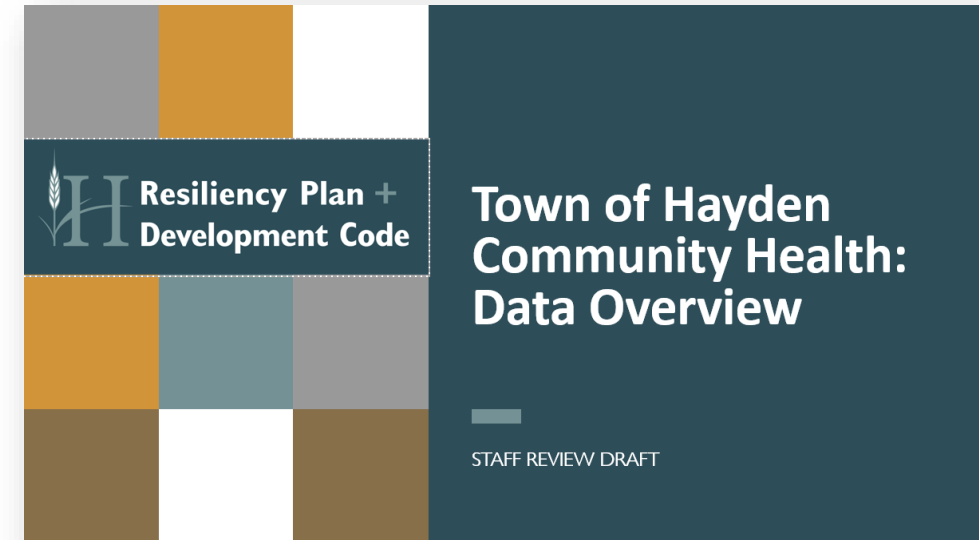
Opportunities for social connection and community gathering

Natural environment and outdoor recreation

# Data Collection

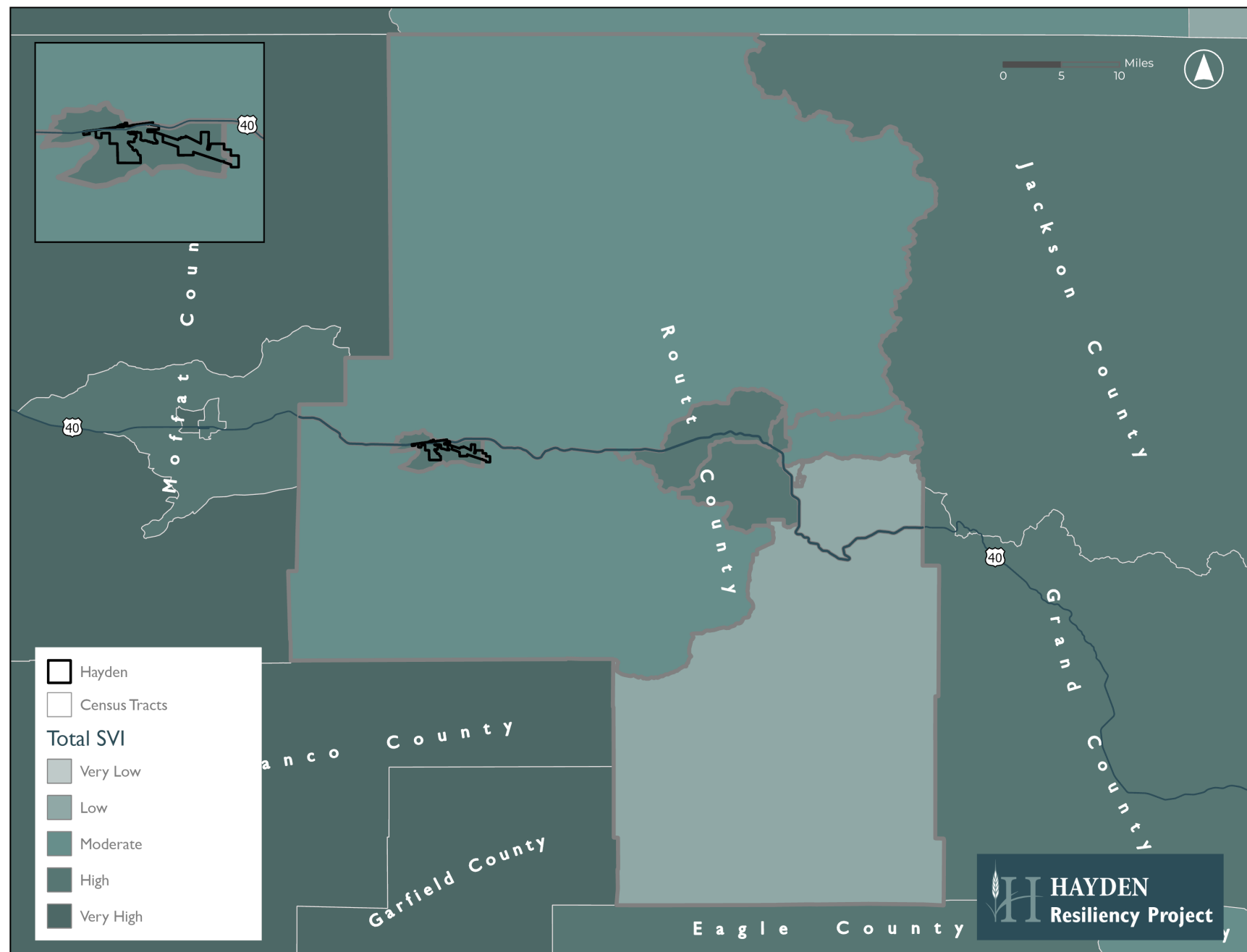
**Goal:** Collect health data from reliable sources to provide an overview of community health in Hayden, including baseline population health indicators such as:

- Live births/deaths, birth defects
- Cancer incidence
- Suicide rate
- Drug overdose
- Maternal health outcomes
- Youth immunization
- Food access
- Nutrition and physical activity



*Coming soon: Community Health Data Overview*

# Social Vulnerability Mapping





# Data Collection

## Online tools from CDPHE:

- Targeted Lead Outreach Tool:  
<https://cdphe.colorado.gov/lead/lead-health/outreach-tool>

### Lead exposure risk

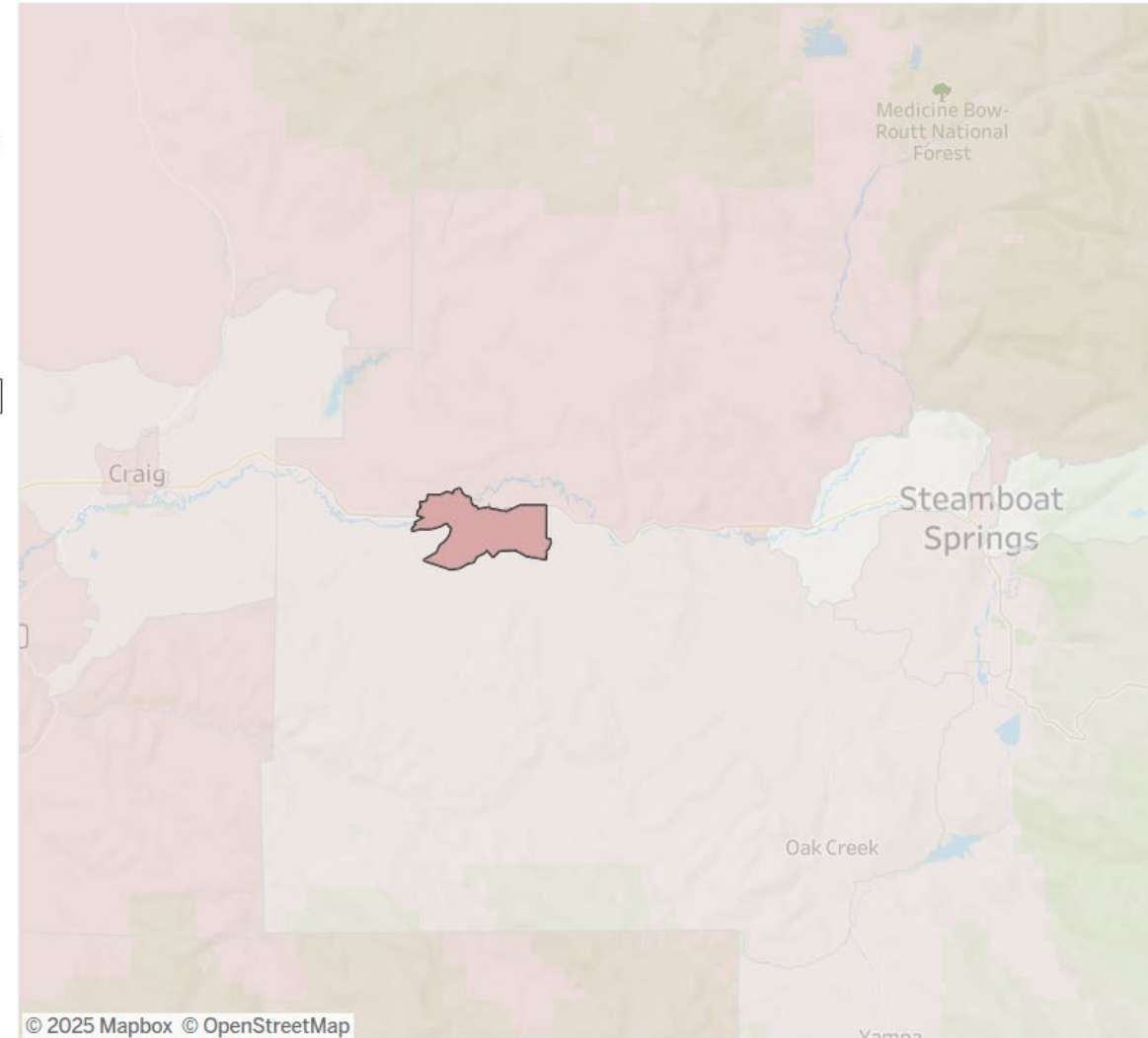
The lead exposure risk index is based on housing age and poverty, which are the two most common risk factors for lead poisoning.

[For more details, please see our methodology.](#)

County

(All) ▼

- High risk
- Moderate risk
- Low risk
- No children <6 years



# Data Collection

Online tools from  
CDPHE:

- Radon Dashboard:  
<https://coepht.colorado.gov/radon-data>

## Home radon test results by census tract, 2005-2024

Percent of pre-mitigation home radon tests with results over the action limit (4 pCi/L).

*Please note, this page does not represent all test results. It represents all tests that could be assigned to a census tract.*

Filter the map by county or by the percent of tests over 4 pCi/L. Hover over the map to learn more. Click on the map to filter the chart and table below.

Percent of tests over 4 pCi/L

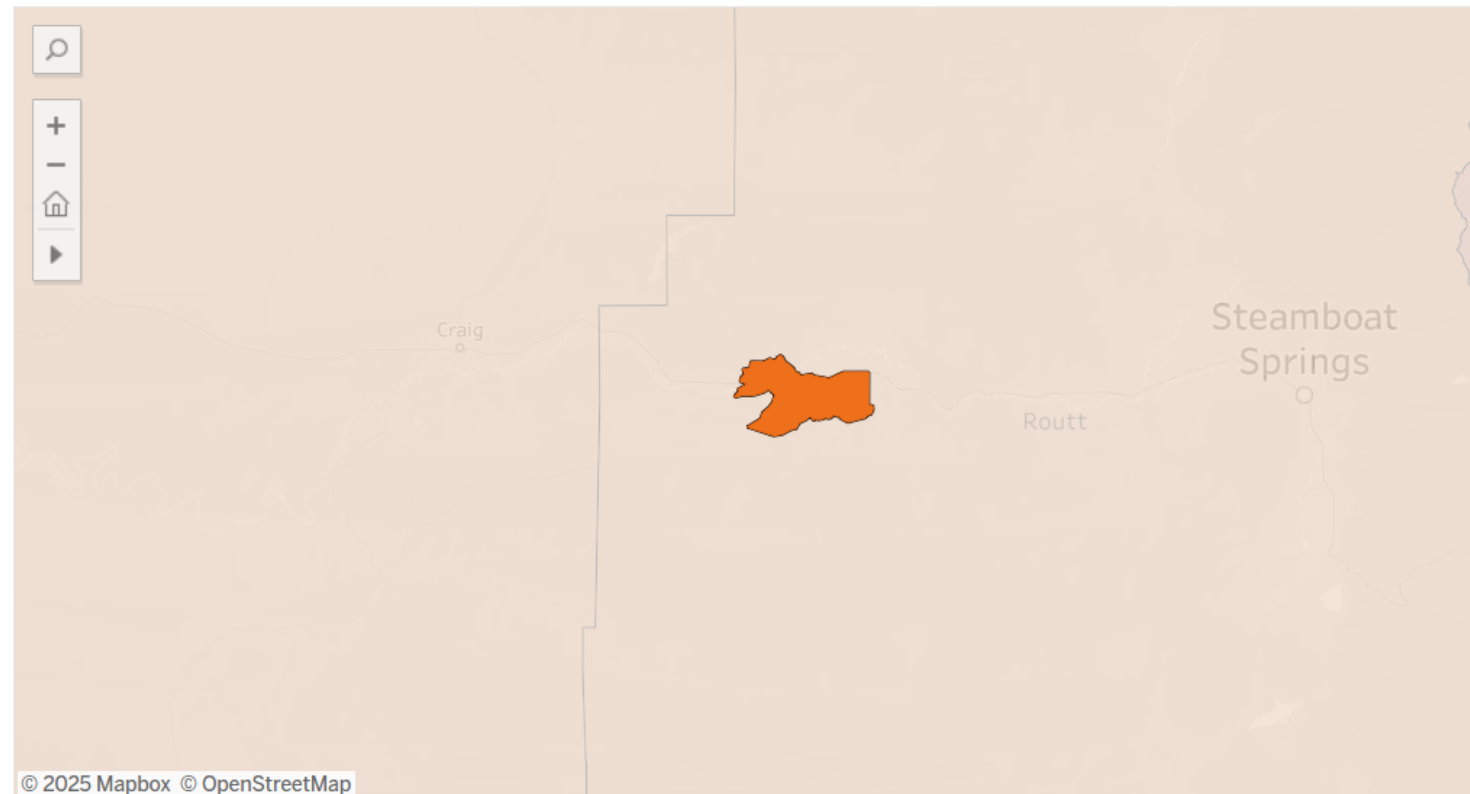


Filter by county

(Multiple values) ▼

Select a range: percent of tests over 4 pCi/L

0.00% 100.00%



# Upcoming Engagement

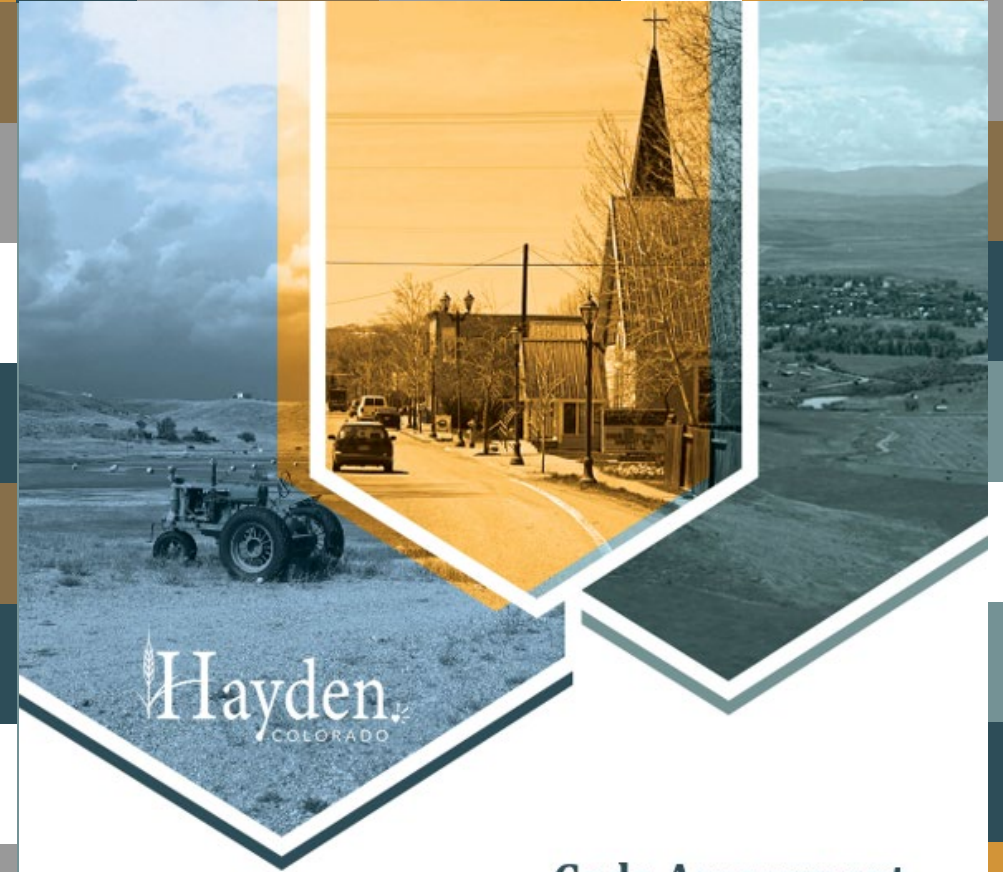
- **Goal:** Understand the community's vision and priorities around health and identify gaps and assets in Hayden.



# CHAAP Discussion

1. If you could add one new resource, service, or gathering space to your community, what would it be?
2. What action items are you hoping to see in the CHAAP?

# Development Code Assessment Survey Results



Hayden,  
COLORADO



**Code Assessment**

Public Draft

July 2025





# Development Code Assessment Survey Results

## KEY CONCERNS

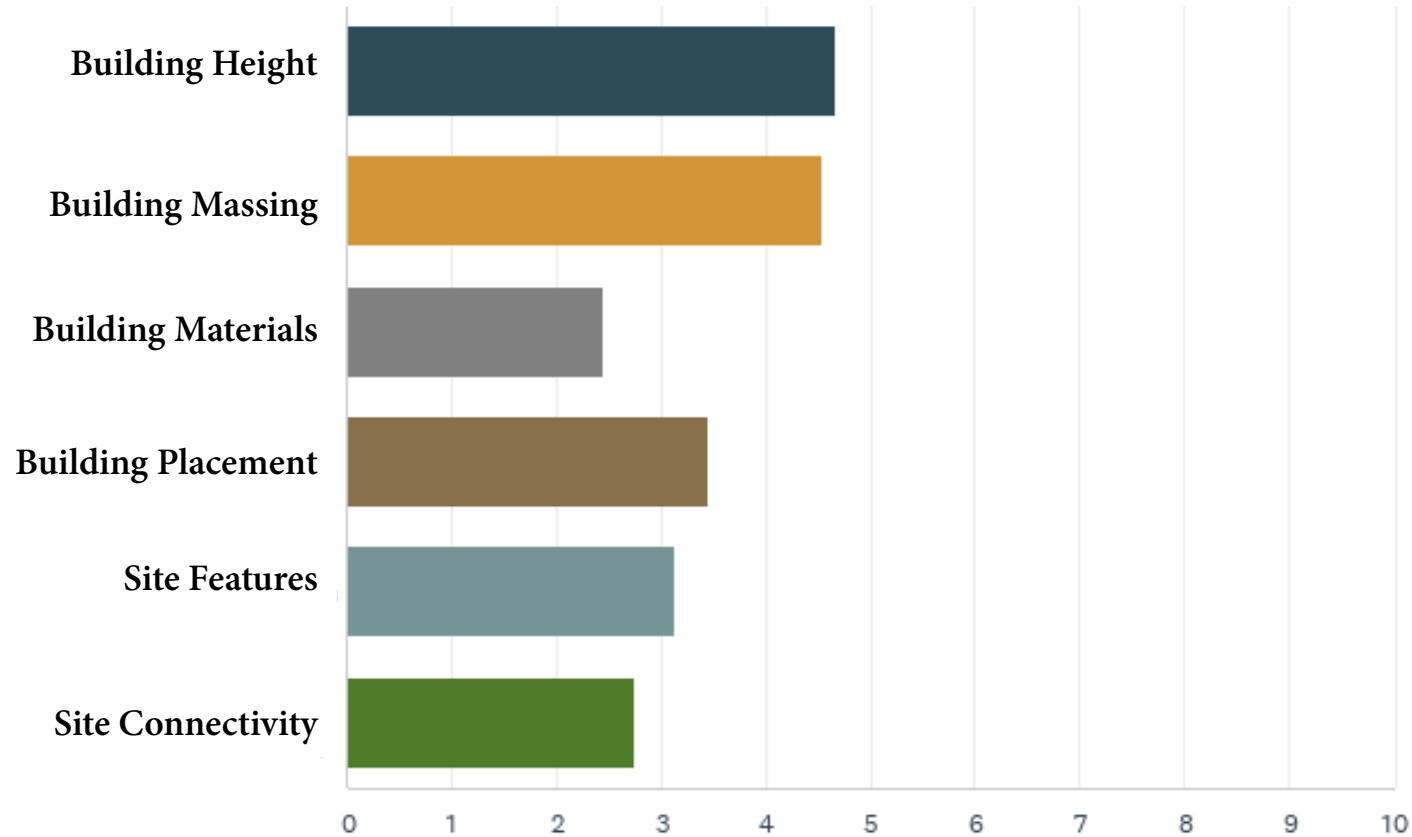
1. The pace of growth and development
2. The need for clear & meaningful public input opportunities
3. The look and feel of new buildings
4. Housing density & housing types
  1. Where higher-density housing is allowed
  2. The desire to see housing for families and older adults
5. Minimum parking requirements

- Carried forward Community Meeting requirement for residential developments with 24+ units
- Clarified topics being reviewed during public hearings
  - Conditional Use Permit = the use is up for review
  - Major Site Plan = the site design is up for review
- Clarified review criteria for each development application type

## Public Input Opportunities



Which of the following site and building design features is most important for maintaining Hayden's small-town feel?



## Design Preferences

Building height and massing were identified as the most important design features for maintaining Hayden's small-town feel.

- Strengthened residential transition standards
  - Increased setbacks (building placement)
  - Decreased height (max. 25 ft in transition area)
  - Limited massing (max. 30 ft continuous wall plane)
- Add outdoor space requirement for multi-unit and mixed-use buildings

## Look and Feel of New Buildings



Table 10.03-1: Table of Allowed Uses

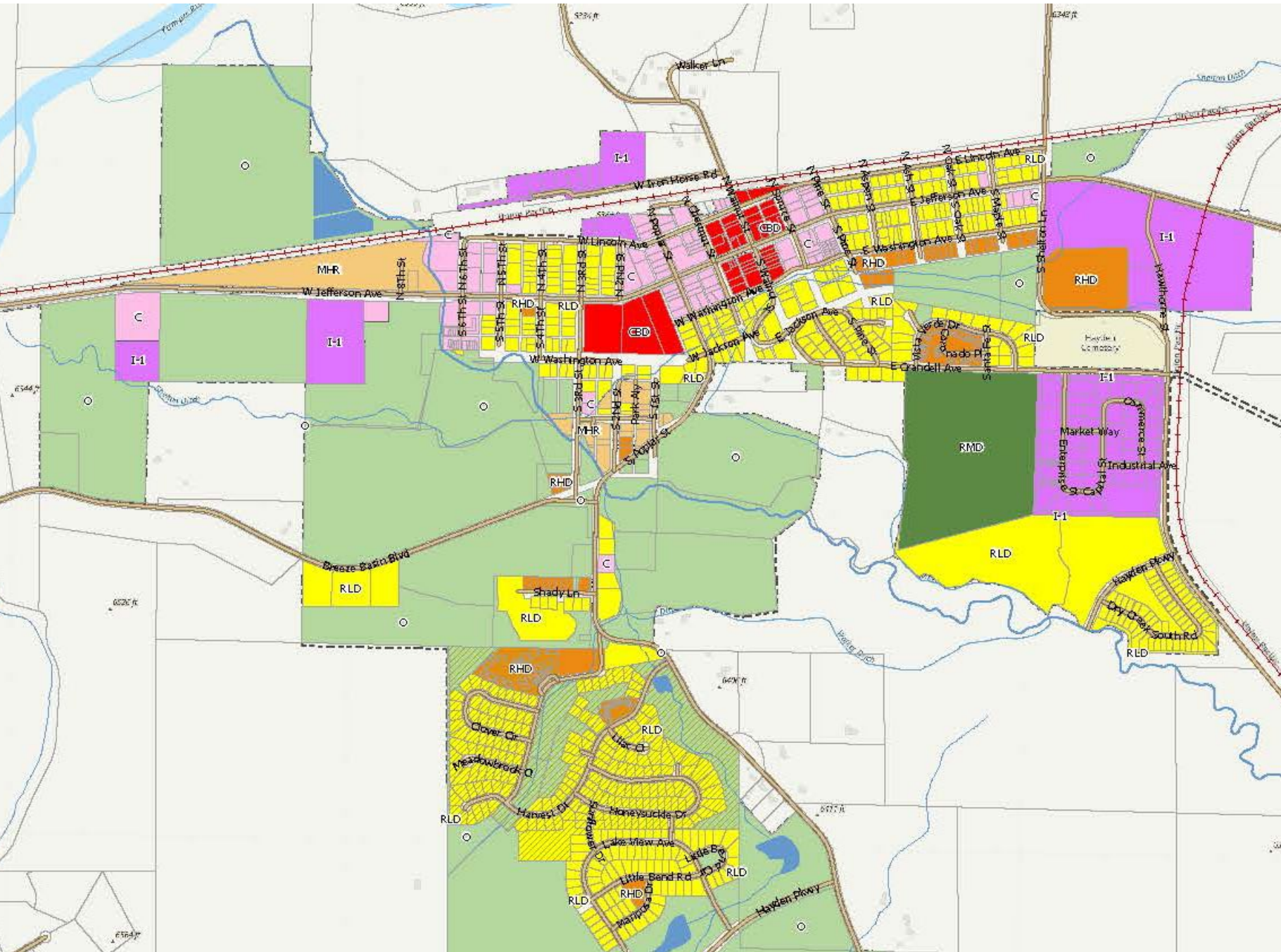
R = Allowed by right C = Conditional Use Permit Required T = Temporary Use Permit Blank = prohibited  
See Section 10.07.04(g) to determine if the proposed use requires a Minor or Major Site Plan.

Current Zone Districts	RLD	RMD	RHD	MHR	CBD	C	I-1	I-2	New	O	New	New	
Proposed Zone Districts	RLD	RMD	RHD	MHR-R	CBD	MU-C	MU-I	I	A	O-R	OS	P	Use-Specific Standards
<b>Residential</b>													
Dwelling, courtyard		R	R										10.03.04(a)(1)
Dwelling, duplex	R	R	R		R	C							
Dwelling, multi-unit			R		R	C							10.03.04(a)(2)
Dwelling, single-unit attached (townhome)		R	R		R	C							
Dwelling, single-unit detached	R	R	C		C	C				R			
Dwelling, work/live					R	R	R						
Manufactured home park or subdivision			C	R									10.03.04(a)(3)

# Housing Allowances

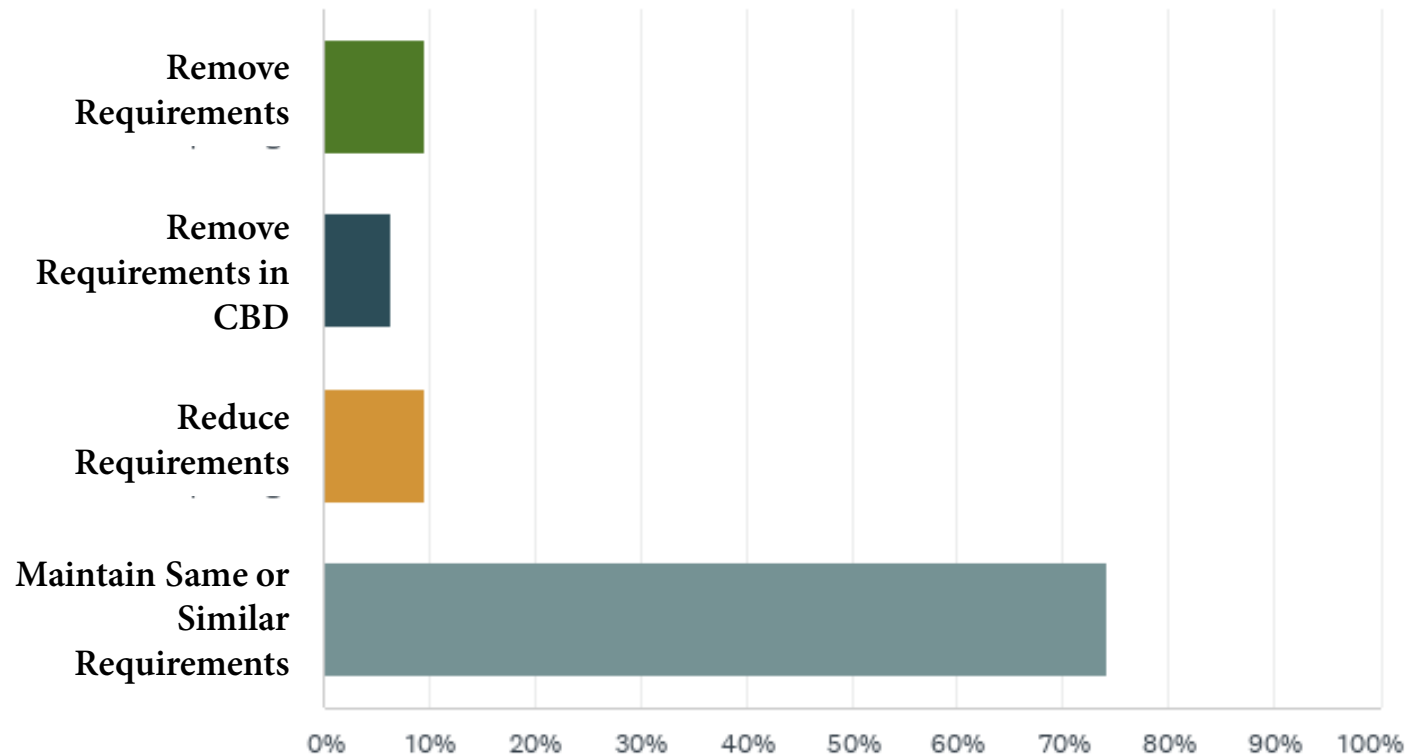
- Most dense housing types are restricted to RHD or more intense zoning district





# Existing Zoning Map

What changes, if any, should be made to the  
Town's minimum off-street parking requirements?



## Support for Off-Street Parking

- Respondents overwhelmingly support maintaining existing off-street parking requirements
- Expressed need for residential off-street parking

# Next Steps



[haydencolorado.com/hayden-resiliency-project](https://haydencolorado.com/hayden-resiliency-project)

\*Decreasing frequency of meetings from every 2 weeks to 3 weeks

Next meeting: September 23<sup>rd</sup>



Thank you!

