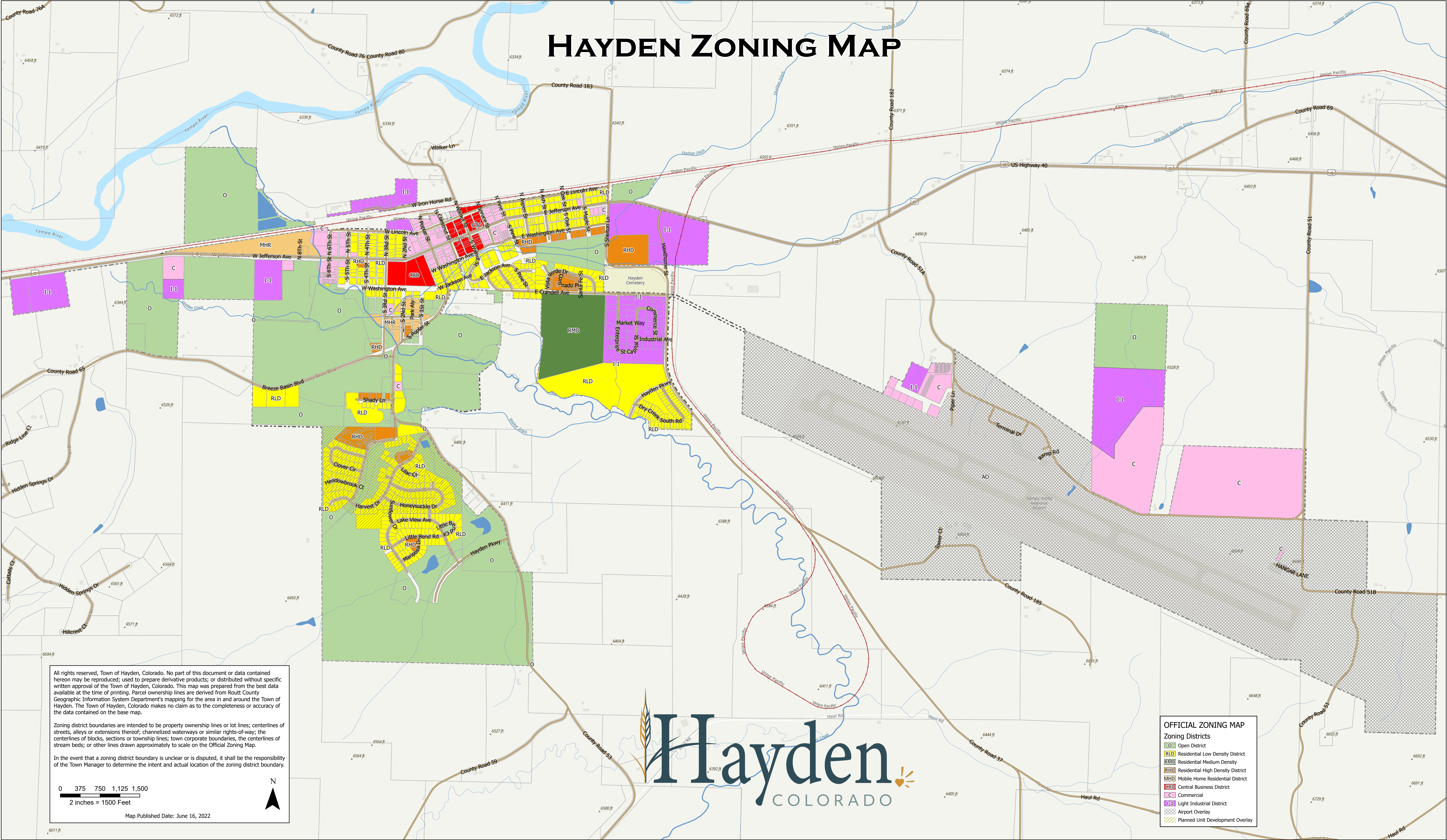


HAYDEN ZONING MAP



All rights reserved, Town of Hayden, Colorado. No part of this document or data contained hereon may be reproduced; used to prepare derivative products; or distributed without specific written approval of the Town of Hayden, Colorado. This map was prepared from the best data available at the time of printing. Parcel ownership lines are derived from Routt County Geographic Information System Department's mapping for the area in and around the Town of Hayden. The Town of Hayden, Colorado makes no claim as to the completeness or accuracy of the data contained on the base map.

Zoning district boundaries are intended to be property ownership lines or lot lines; centerlines of streets, alleys or extensions thereof; channelized waterways or similar rights-of-way; the centerlines of blocks, sections or township lines; town corporate boundaries, the centerlines of stream beds; or other lines drawn approximately to scale on the Official Zoning Map.

In the event that a zoning district boundary is unclear or is disputed, it shall be the responsibility of the Town Manager to determine the intent and actual location of the zoning district boundary.

0 375 750 1,125 1,500
2 inches = 1500 Feet

Map Published Date: June 16, 2022

- OFFICIAL ZONING MAP**
Zoning Districts
- Open District
 - Residential Low Density District
 - Residential Medium Density
 - Residential High Density District
 - Mobile Home Residential District
 - Central Business District
 - Commercial
 - Light Industrial District
 - Airport Overlay
 - Planned Unit Development Overlay

